

Collegiate Winds

Non-music majors who wish to audition for Collegiate Winds only should prepare the following two pages:

- I. Compulsories
- II. Lyrical Etude (Vocalise #2)

Compulsories

#1 - Full Range Scale with Articulation Pattern - At a tempo that demonstrates evenness of rhythm, depth of tone, and impeccable intonation.

Bass Clarinet
in B \flat



#2 - Single Tongue - As fast as possible, while presenting clear articulations, accurate rhythm, and a consistent pulse of your choosing.

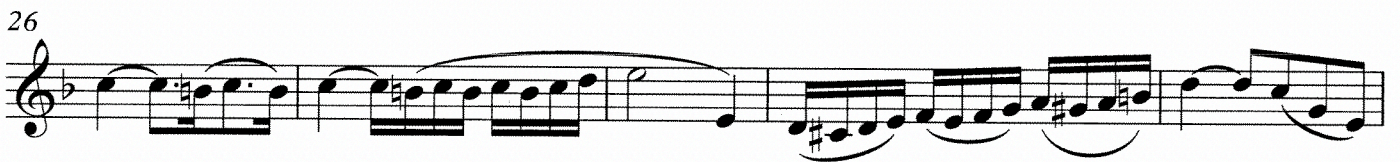


Vocalise #2

Clarinet in B \flat 1

Giuseppe Concone

Andante Cantabile ♩ = 76



Wind Symphony, Symphonic Band, Symphony Orchestra Winds

Music majors and non-majors who wish to be considered for placement in all ensembles should prepare the following materials:

- I. Holst "Second Suite in F"
 - a. Excerpts as noted
- II. Grainger "Lincolnshire Posy"
 - a. Excerpt as noted
- III. Gigue

Second Suite in F Movement #1 Gustav Holst

Tempo: Dotted quarter note equals 116-120

Musical score for the first movement of the Second Suite in F, measures 116-120. The score is written in bass clef with a key signature of two flats (B-flat and E-flat) and a 6/8 time signature. It consists of four staves of music. The first staff begins with a large letter 'H' above the staff. The second staff begins with a large letter 'J' above the staff and a dynamic marking of *p* (piano) below the staff. The third staff includes a *cresc.* (crescendo) marking and ends with a large letter 'K' above the staff and a dynamic marking of *ff* (fortissimo) below the staff. The fourth staff continues the melodic line.

Second Suite in F Movement #4 Gustav Holst

Tempo: Dotted quarter note equals 116

Musical score for the fourth movement of the Second Suite in F, measures 116-120. The score is written in treble clef with a key signature of one sharp (F#) and a 6/8 time signature. It consists of two staves of music. The first staff begins with the tempo marking *Allegro moderato* and the number '16' above the staff, followed by a large letter 'A' above the staff. A dynamic marking of *p* (piano) is placed below the staff. The second staff continues the melodic line and ends with a *cresc.* (crescendo) marking. The piece concludes with a double bar line and a repeat sign.

Lincolnshire Posy, Movement 1 Percy Grainger

Tempo: Dotted quarter note equals 116

B♭ BASS CLARINET

Brisk

18 *mf* (detached)

26

34 *f* *mf* (detached) *p* (gently)

louden

42 *mf* *mp*

50 *mp*

58

Gigue

76
♩. = 104

mf

6

p *cresc.*

11

f

15

20

mf *dim.* *mp*

25

p *cresc. poco a poco*

30

f

Detailed description of the musical score: The score consists of seven staves of music. The first staff begins with a tempo marking of 76 and a quarter note equal to 104. The music is written in a treble clef with a 3/8 time signature. The first staff starts with a mezzo-forte (*mf*) dynamic and includes a trill (*tr.*) in the final measure. The second staff begins at measure 6 with a piano (*p*) dynamic and a crescendo (*cresc.*) marking. The third staff starts at measure 11 with a forte (*f*) dynamic. The fourth staff is at measure 15. The fifth staff starts at measure 20 with a mezzo-forte (*mf*) dynamic, a diminuendo (*dim.*) marking, and a mezzo-piano (*mp*) dynamic at the end. The sixth staff begins at measure 25 with a piano (*p*) dynamic and a 'crescendo poco a poco' (*cresc. poco a poco*) marking. The seventh staff starts at measure 30 with a forte (*f*) dynamic.