

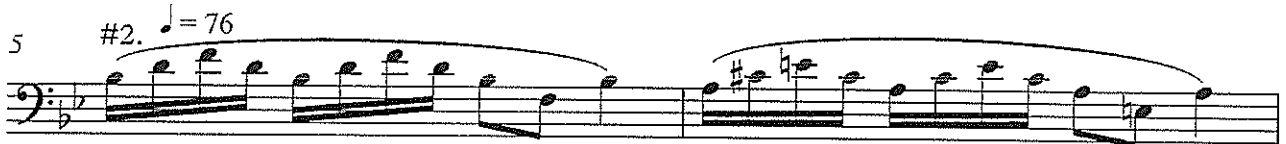
Collegiate Winds

Non-music majors who wish to audition for Collegiate Winds only should prepare the following two pages:

- I. Compulsories
- II. Lyrical Etude (Vocalise #2)

Compulsories - Trombone/Euphonium

#1. Lip Slurs ♩ = 76



14 #4. Double Tonguing (fast, but clean)



18



24 #5. Triple Tonguing (fast, but clean)



29

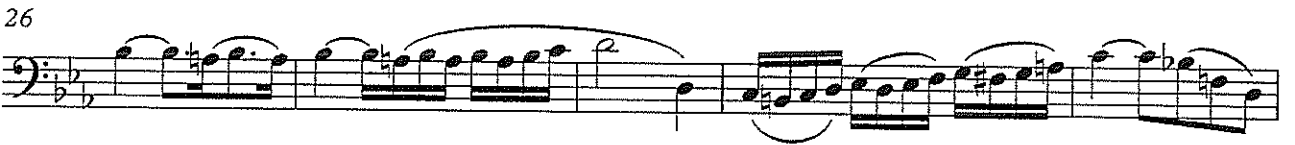
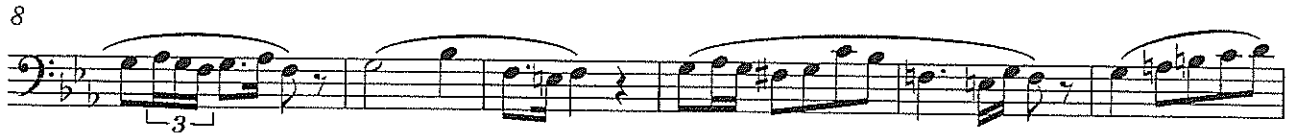


Vocalise #2

Giuseppe Concone

Andante Cantabile

♩ = 76



Wind Symphony, Symphonic Band, Symphony Orchestra Winds

Music majors and non-majors who wish to be considered for placement in all ensembles should prepare the following materials:

- I. Holst "Second Suite in F"
 - a. Excerpt as noted
- II. Vaughan Williams "Toccata Marziale"
 - a. Excerpt as noted
- III. Rossini "La Giza Ladra Overture"
 - a. Excerpt as noted
- IV. Mozart *Requiem*
 - a. "Tuba Mirum" Excerpt as noted
- V. R. Strauss "Till Eulenspiegel's Merry Pranks"
 - a. Excerpt as noted

Second Suite in F Movement #1 Gustav Holst

Tempo: Half note equals 120

© Copyright 1922 by Boosey & Co. Ltd.
Revised Military Band Score © Copyright 1984 by Boosey & Co. Ltd.

QMB-502

All rights reserved
Printed in U.S.A.

"Toccata Marziale" Ralph Vaughan Williams

Tempo: Quarter note equals 104

Beginning to measure 30

Allegro maestoso (♩ = 104-112)

The image shows a musical score for the beginning of the 'Toccata Marziale' by Ralph Vaughan Williams. The score is written in bass clef with a key signature of two flats (B-flat and E-flat). The tempo is marked 'Allegro maestoso' with a quarter note equal to 104-112 beats. The score consists of five lines of music, each containing measures 1 through 31. Measure numbers 1, 2, 3, 4, 5, 6, 7, 8, 9, 10, 11, 12, 13, 14, 15, 16, 18, 19, 20, 21, 22, 23, 24, 26, 27, 28, 29, 30, and 31 are indicated above the notes. Dynamics include *f*, *sim.*, *p*, *ff*, and *ff marc.*. There are also markings for *p cresc.* and a fermata over measure 31. The score includes various musical notations such as slurs, accents, and dynamic hairpins.

La Gazza Ladra Overture (Rossini)

Trombone 1, Reh. C - M.147

Dotted Half = 60-64

62 **Allegro.** 16 **Bb.** *f* *poco rit. a tempo* 27 **C** *f* *marc.*

117 *f* *f*

124 *f* *f*

131 *f*

139 *f cresc.* *ff* *ff*

149

Requiem, Tuba Mirum (Mozart)

Trombone 2 solo

Quarter = 80

Andante

f *mf*

8

12

15

Till Eulenspiegel (R. Strauss)

Trombone 1, 4 measures before reh. 36 to 16th measure of reh. 37

Dotted quarter = 130 (6/8 time)

The image shows a musical score for Trombone 1, measures 35 through 40. The score is written in 6/8 time and features five staves. The key signature has one flat (B-flat). Measure 35 begins with a dynamic marking of *fp*. Measure 36 starts with a dynamic marking of *f* and includes the instruction *immer ausgelassener und*. Measure 37 begins with a dynamic marking of *ff* and includes the instruction *lebhafter*. Measure 38 has a dynamic marking of *ff*. Measure 39 has a dynamic marking of *fff*. Measure 40 ends with a dynamic marking of *fff*. The score includes various musical notations such as slurs, accents, and dynamic markings. Red brackets highlight the first measure of measure 35 and the last measure of measure 40.